



# OMEGA PRODUCTS PVT. LTD.

Unit No.50,SDF II, SEEPZ (SEZ ) Andheri ( East ), Mumbai 400 096

## Ceramic Encased Resistor (SQZ type) - OCZ Series

### DESCRIPTION

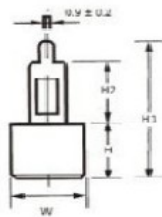
A resistance element of nicrom alloy is wound on ceramic body. Resistor is fitted with cement in ceramic boats and cured. The fire proof ceramic construction provides excellent thermal conductivity and resistance to solvent and moisture & for mechanical and climatic protection, Marking is given with respect to designated value, tolerance & type no. All Resistors are subjected to tesing before dispatch.

### FEATURES

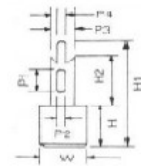
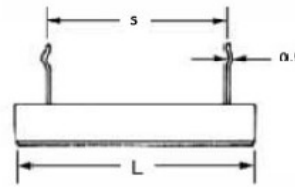
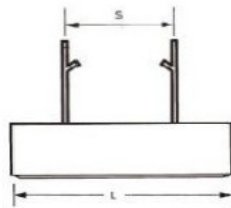
- Wide Range of Resistors
- Low TCR available
- Low Tolerances available
- RoHS Compliant
- Custom Built Design and values available



A TYPE



B TYPE



### SPECIFICATION

Type A + B	Power Rating (W)	Resistance Range (Ω)	Dimension (mm)											TCR
			L ± 2	H ± 1	W ± 1	S ± 1.5	H1 ± 1	H2 ± 1	P1	P2	P3	P4		
OCZ 5	5	0.1Ω~50KΩ	27	9.5	9.5	15	24(30)(40)	9.5(15)(25)	4.0	2.0	7.5	1.5	±100,200 ppm	
OCZ 7	7	0.1Ω~50KΩ	35	9.5	9.5	22	24(30)(40)	9.5(15)(25)	4.0	2.0	7.5	1.5	±100,200 ppm	
OCZ 10	10	0.2Ω~50KΩ	48	9.5	9.5	33	24(30)(40)	9.5(15)(25)	4.0	2.0	7.5	1.5	±100,200 ppm	
OCZ 15	15	0.5Ω~100KΩ	48	12.5	12.5	33	34.5	15	7.0	6.0	10.0	2.7	±100,200 ppm	
OCZ 20	20	0.5Ω~100KΩ	63.5	12.5	12.5	42	34.5	15	7.0	6.0	10.0	2.7	±100,200 ppm	
OCZ 3S	3	0.1Ω~50Ω	22	9.5	9.5	10	23	12	4.0	2.0	7.5	1.5	±100,200 ppm	
OCZ 5S	5	0.1Ω~50Ω	25	9.5	9.5	10	24	12	4.0	2.0	7.5	1.5	±100,200 ppm	

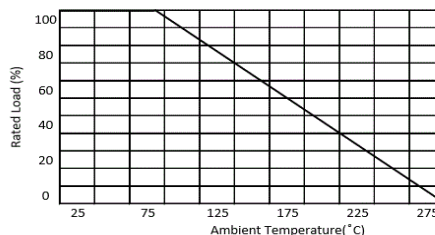
Above 500 Ohm we can supply in Metal oxide

### PERFORMANCE CHARACTERISTIC

	Requirement Shall not Exceed
Tolerance	±1% , ±5%
Short Term Overload (3 x Rated Wattage - 5 Sec)	Delta R ± (0.2% +0.05 Ohms)
Load Life (Rated at 70°C 1000 Hrs 1.5/0.5 Hr ON/OFF)	Delta R ± (5.0% +0.05 Ohms)
Temperature Cycling (-55 /+155, 5 cycles )	Delta R ± (0.1% +0.05 Ohms)
Solderability (Solder bath dip - 5 Sec)	Greater than 95% Coverage
Resistance to Solvents (Solvent dip - 3 min)	No effect of IPA /TCE Solvents
Damp Heat Steady State (40°C/95% Rh - 56 days)	Delta R ± (3.0% +0.05 Ohms)
DWV Test	No flash over upto 1 KV
Insulation Resistance	500M Ω

Derating

Derating Curve :



### Ordering Info:

OCZ5 390 J B 100 PPM W

\*Specifications is subject to change without notice