



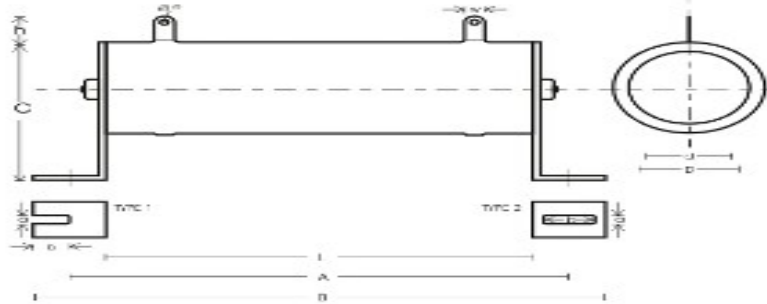
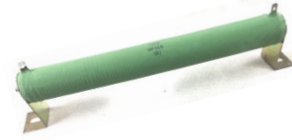
High power Wire wound resistors - OHP Series

DESCRIPTION

High alumina ceramic tubes are wire wound with nichrome/Eureka wires and spot welded on edges of termination. The resistor are coated with flame proof special epoxy for Electrical , Mechanical and climatic protection, Marking is done with respect to designated value on coated Resistor.

FEATURES

- Non-Inductive type available
- Good Surge and Pulse Performance
- Choice of three physical configurations : (1) Fixed (2) Tapped (3) Adjustable (OSV type)
- Custom Designed Resistors & Assemblies Available on Request
- Mounting Accessories & Terminal Accessories Available



SPECIFICATION

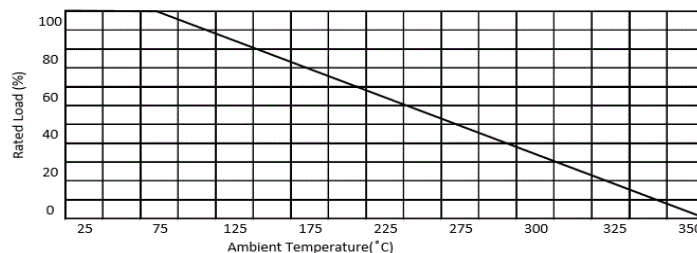
TYPE	Rating @ 70° C	OD (D)	Tube length (L)	ID (d)	Clamp Width (W)	Clamp hole dia (e)	Clamp height (h)	Pitch (A)	Total length (B)	Total height C	Clamp slot (a)	Clamp slot length (b)
OHP150	150	30	200	19	8	4.2	32	225	245	52	6.5	11.5
OHP200	200	30	250	19	8	4.2	32	275	195	52	6.5	11.5
OHP250	250	30	300	19	8	4.2	32	325	345	52	6.5	11.5
OHP300	300	38	300	21	8	4.2	34	330	352	59	6.5	12.5
OHP400	400	50	300	30	12	5.2	46	356	368	90	10	14
OHP500	500	50	355	30	12	5.2	46	411	423	90	10	14
OHP600	600	50	380	30	12	5.2	46	436	448	90	10	14
OHP750	750	50	455	30	12	5.2	46	511	523	90	10	14
OHP1000	1000	50	555	30	12	5.2	46	611	623	90	10	14

PERFORMANCE CHARACTERISTIC

	Requirement Shall not Exceed
Ohmic value	0.1Ω to 100K Ω
Ohmic Tolerance	Standard 5% Lower Tolerance Available
Temperature Co-efficient	± 50ppm/°C to ±200ppm/°C
Surface Temperature	300°C at 40°C Ambient
Short Term Overload (2.5 x Rated voltage - 5 Sec)	Delta R ± (1.0% +0.05 Ohms)
Load Life (Rated at 25°C 1000 Hrs 1.5/0.5 Hr ON/OFF)	Delta R ± (5.0% +0.05 Ohms)
Insulation Resistance (at 500V for 1 Min)	Shall not be less than 2000 M Ohms
DWV Test	Delta R ± (0.5% +0.05 Ohms) & No Flash over at 1KV
Resistance Soldering Heat (260° C 10 Sec)	Delta R ± (1.0% +0.05 Ohms)
Solderability (Solder bath dip - 5 Sec)	Greater than 95% Coverage
Resistance to Solvents (Solvent dip - 3 min)	No effect of IPA /TCE Solvents
Damp Heat Steady State (40°C/95% Rh - 56 days)	Delta R ± (5.0% +0.05 Ohms)

Derating

Derating Curve :



Ordering Info

OHP500 / OSV500 1K J 200 PPM

*Specifications is subject to change without notice