



## Surface Mount Resistor - OSM Series

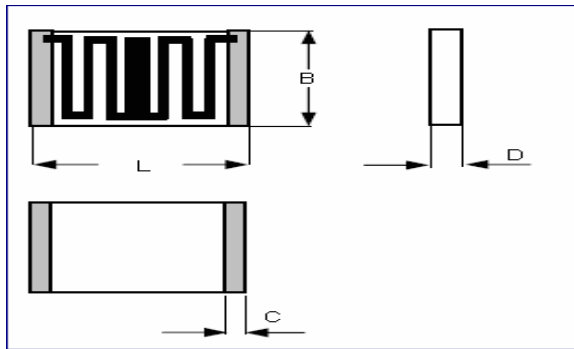
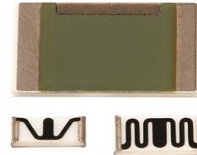
### DESCRIPTION

A homogeneous film of conductive & resistive ink is screen printed on 96% alumina ceramic substrates. Laser machine is used to achieve the highly precise resistance tolerance by trimming. The resistor are screen printed with blue epoxy for electrical , mechanical and climatic protection. Marking is done with respect to type no, resistance value, tolerance, on resistor.

### FEATURES

Low VCR  
Low TCR  
Wide Range of Resistors  
Low Noise

High Voltages  
Tighter Tolerance  
High Stability  
Low Inductance



### SPECIFICATION

TYPE	Watt	L ( +0.15/- 0.05)	B ( +0.20/-	D ( +0.20/- 0.10)	C ( ±0.20)	Max Working Volt (KV)	Resistance Range
OSM 2010	0.5 W	5.10	2.50	0.60	1.20	1.5	100K to 1G
OSM 2512	1 W	6.30	3.50	0.60	0.90	2.5	100K to 1G
OSM 4020	2 W	10.20	5.10	0.60	0.90	4	100K to 1G

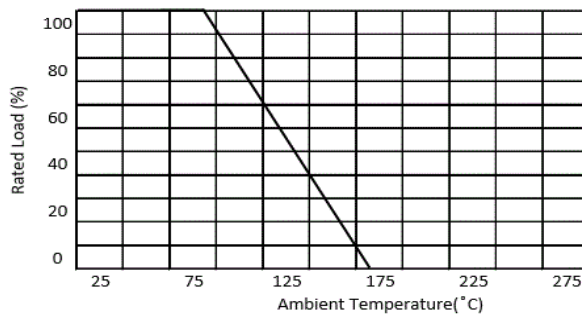
### PERFORMANCE CHARACTERISTIC

**Requirement shall not exceed**

Tolerance	±0.5% to 1%
Load Life (Rated 1000 Hrs 1.5/0.5 Hr ON/OFF)	Delta R ±0.25%
Voltage Coefficient Resistance (VCR)	± 5, 10, 50 ppm/V
Temperature Coefficient Resistance (TCR)	± 25, 50, 100 ppm/°C
Solderability (250°C - 3 Sec)	> 95% Coverage
Max Soldering Temperature	260°C -10 Sec

Derating

**Derating Curve :**



### Ordering Info

OSM 10M F 50 ppm

\* Specification is subject to change without notice.